



VACANT TENANCY OPPORTUNITY AVAILABLE!

Historic Village - 17th Avenue West (near Tauranga Hospital)

The Historic Village has a vacant ground floor tenancy space available on Taniwha Street in our Community Organisation Zone. Our ideal incoming tenant will be a not-for-profit community group seeking office space. They will add to the vibrancy of the Village and help us to meet our objective of creating a thriving and sought-after place to hold an event, run a meeting or lease a space. Is this you?

THE HISTORIC VILLAGE VISION:

Our community heart where people visit, connect and belong – to the past, present and future.

OUR PURPOSE:

To provide a highly valued, safe and well used community destination, accessible to all stakeholders.

OUR OBJECTIVE FOR TENANT MANAGEMENT AND ACQUISITION:

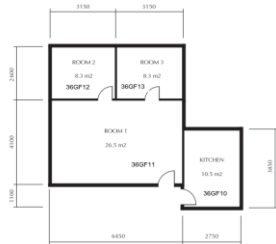
Attracting a balanced mix of retail and community tenants who deliver on the brand promise of The Historic Village.



AVAILABLE SPACE

Ground floor multi-office Space

One tenancy:
Office, 53.6m²



FEATURES

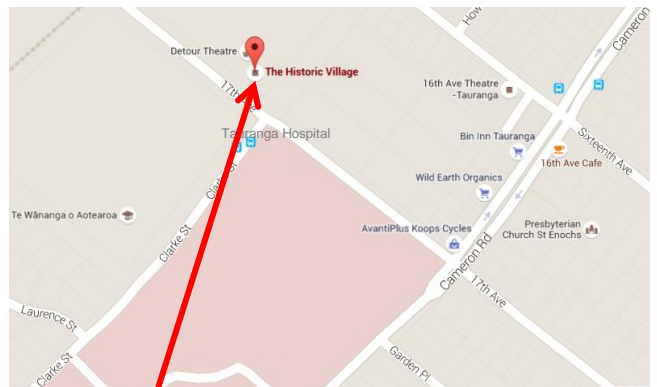
Taniwha Street frontage

Kitchenette

Overnight security patrols

Pedestrian foot traffic in the 12 months to 16

December 2018: 245,900 (via main entrance only)



Registrations of Interest (please also include a Business Plan) due:

4pm, Friday 8 February 2019

Forms available from the **Historic Village office** or www.historicvillage.co.nz/leasing/small-businesses

Please contact:

Erana Elvin

P: (07) 571 3700

E: village@tauranga.govt.nz

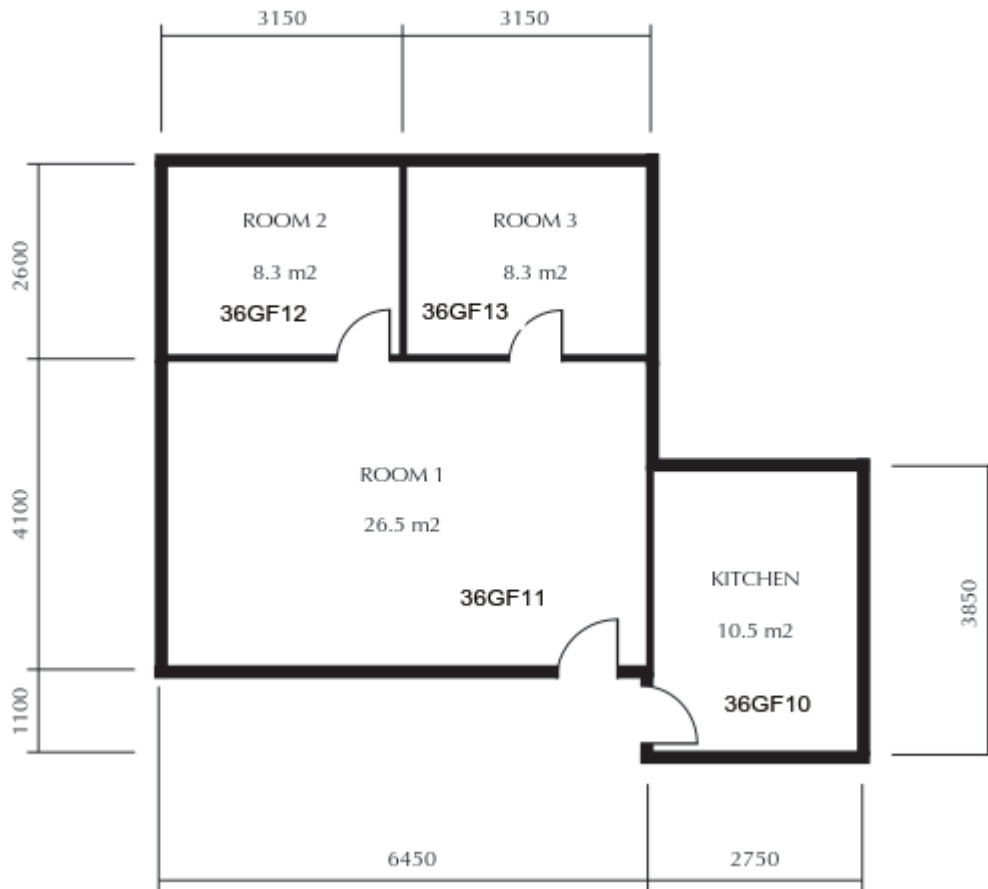
W: www.historicvillage.co.nz





AVAILABLE TENANCY

Building 36b



RENT

	m ²		Rental Rate per m ²		Rental Rate per annum
Building 36b (36GF10-13) <i>Room 1,2,3 & Kitchen</i>	53.6	X	\$100.00	=	\$5,360.00
				SubTotal	\$5,360.00
				GST	\$804.00
				Total	\$6,164.00

This equates to:	Sub-Total	GST	Total
Monthly Rent Payment to TCC	\$446.67	\$67.00	\$513.67

OUTGOINGS

	m ²	Rates	Insurance	Other	Water Rates	Power	TOTAL
Building 36b	53.6	\$69.89	\$131.41	\$356.34	\$64.07	\$375.00	\$996.71
GST		\$10.48	\$19.71	\$53.45	\$9.61	\$56.25	\$149.51
TOTAL		\$80.37	\$151.12	\$409.79	\$73.68	\$431.25	\$1,146.22

This equates to:	Sub-Total	GST	Total
Monthly Outgoings Payment to TCC	\$83.06	\$12.46	\$95.52

Fibre can also be connected at an added cost of \$65.00+GST per month.

Please contact:

Erana Elvin

P: (07) 571 3700

E: village@tauranga.govt.nz

W: www.historicvillage.co.nz

