

VACANT TENANCY OPPORTUNITY AVAILABLE!

Historic Village - 17th Avenue West (near Tauranga Hospital)

The Historic Village has a vacant upstairs tenancy space available near the main entrance. Our ideal incoming tenant will be an arts based organisation seeking office space and will understand the dynamic involved with the Cinema on the ground floor. They will add to the vibrancy of the Village and help us to meet our objective of creating a thriving and sought-after place to hold an event, run a meeting or lease a space. The available space is on the first floor of the recently refurbished Village Cinema (formerly TECT Theatre). Is this you?

THE HISTORIC VILLAGE VISION:

Our community heart where people visit, connect and belong – to the past, present and future.

OUR PURPOSE:

To provide a highly valued, safe and well used community destination, accessible to all stakeholders.

OUR OBJECTIVE FOR TENANT MANAGEMENT AND ACQUISITION:

Attracting a balanced mix of retail and community tenants who deliver on the brand promise of The Historic Village.



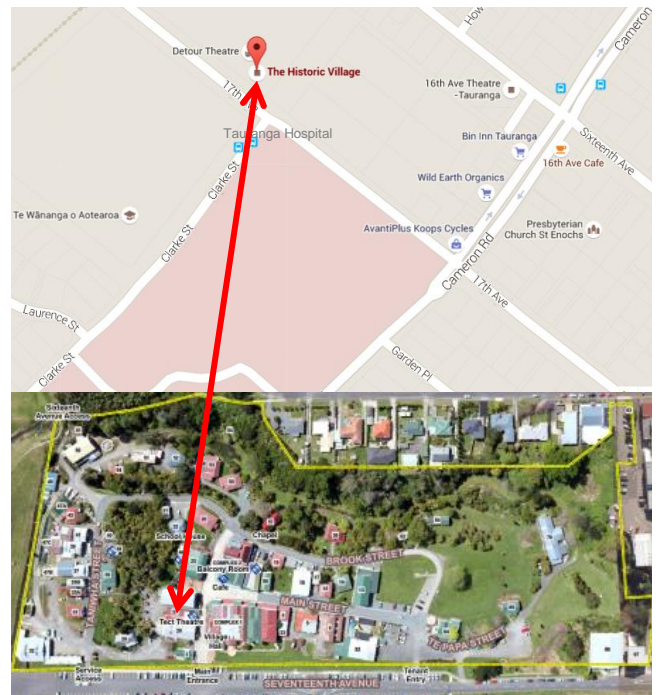
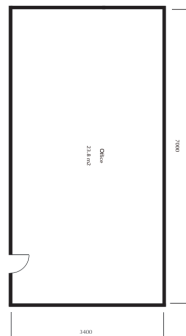
AVAILABLE SPACE

First floor office space

One tenancy:
Office, 23.8m²

FEATURES

- Market Street frontage
- External staircase entry (*separate to Village Cinema entrance*)
- Overnight security patrols
- Pedestrian foot traffic in the 12 months to 16 December 2018: 245,900 (via main entrance only)



Registrations of Interest (please also include a Business Plan) due:

4pm, Friday 8 February 2019

Forms available from the **Historic Village office** or www.historicvillage.co.nz/leasing/small-businesses

Please contact:

Erana Elvin

P: (07) 571 3700

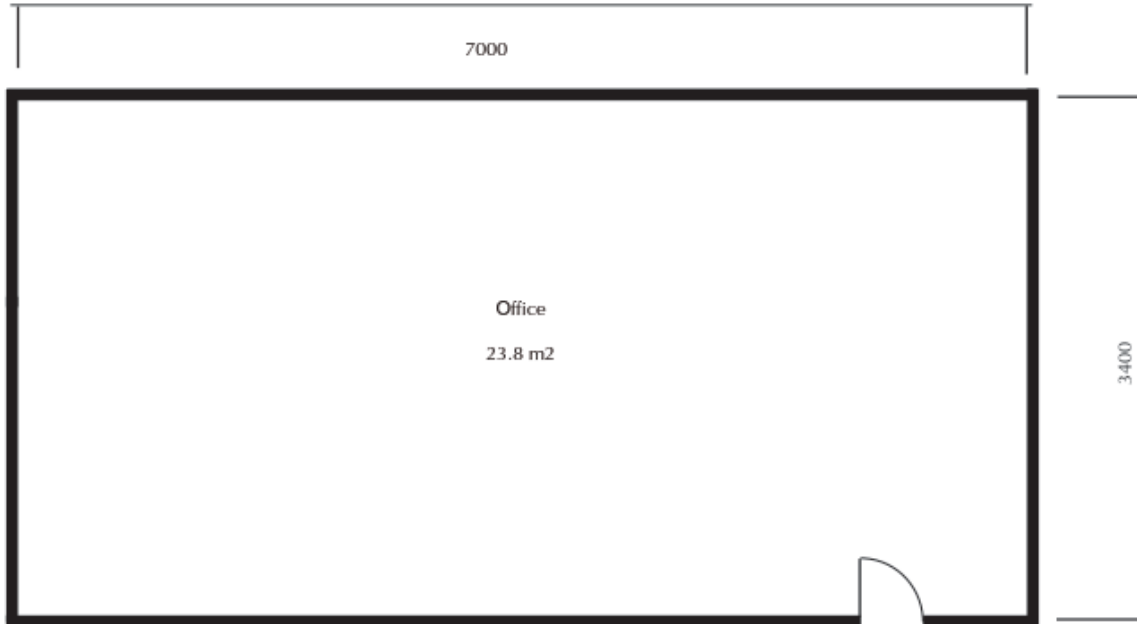
E: village@tauranga.govt.nz

W: www.historicvillage.co.nz



AVAILABLE TENANCY

Building 27: 27.1F.2



RENT

| Annual Figures | m ² | Rental Rate per m ² | Rental Rate per annum |
|-----------------------|----------------|--------------------------------|-----------------------|
| Building 27 – 27.1F.2 | 23.8 | x \$130.00 | = \$3,094.00 |
| | | SubTotal | \$3,094.00 |
| | | GST | \$464.10 |
| | | Total | \$3,558.10 |

| This equates to a monthly rent payment requirement of: | Sub-Total | GST | Total |
|--|-----------|---------|-----------------|
| | \$218.17 | \$32.73 | \$250.89 |

OUTGOINGS

| Annual Figures | m ² | Rates | Insurance | Other (Security, Rubbish, Sanitation etc) | Water Rates | Power | TOTAL |
|--|----------------|--------------|----------------|---|-----------------|----------------|-----------------|
| <i>(based off previous financial year's actuals)</i> | | | | | | | |
| Building 27 – 27.1F.2 | 23.8 | \$29.86 | \$56.67 | \$152.25 | \$27.39 | \$150.00 | \$416.17 |
| | | GST | \$4.48 | \$8.50 | \$22.84 | \$4.11 | \$22.50 |
| | | TOTAL | \$34.34 | \$65.17 | \$175.09 | \$31.50 | \$172.50 |
| | | | | | | | \$478.60 |

| This equates to a monthly outgoings payment requirement of: | Sub-Total | GST | Total |
|---|-----------|--------|----------------|
| | \$34.68 | \$5.20 | \$39.88 |

Fibre can also be connected at an added cost of \$65.00+GST per month.

Please contact:

Erana Elvin

P: (07) 571 3700

E: village@tauranga.govt.nz

W: www.historicvillage.co.nz

